

FINANCIAL FACTBOOK 2010

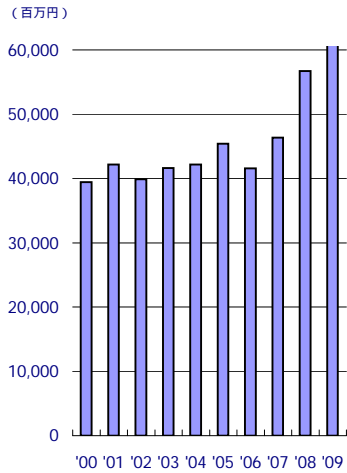
For the year ended March 31,2010

証券コード：6455

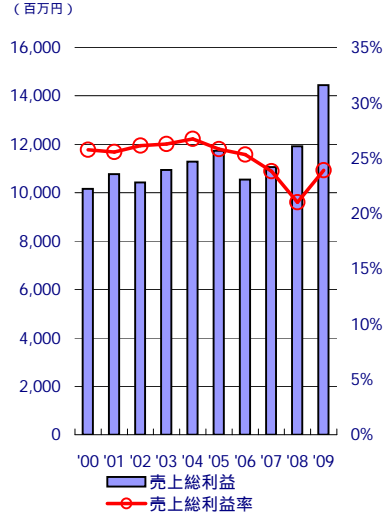
株式会社 **モリタホールディングス**

<http://www.morita119.com>

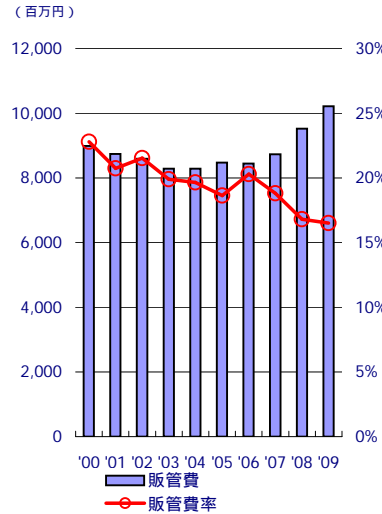
売上高



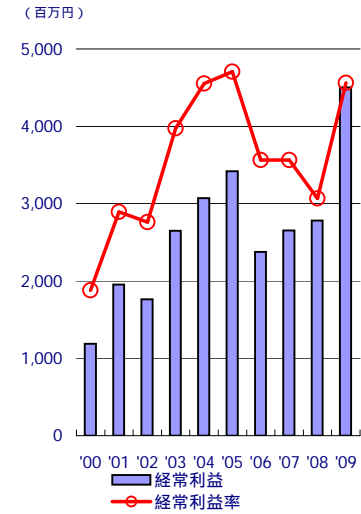
売上総利益・売上総利益率



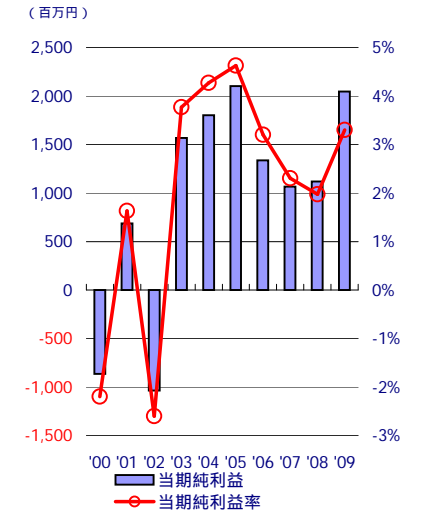
販管費・販管費率



経常利益・経常利益率



当期純利益・当期純利益率



連結損益計算書

単位：百万円

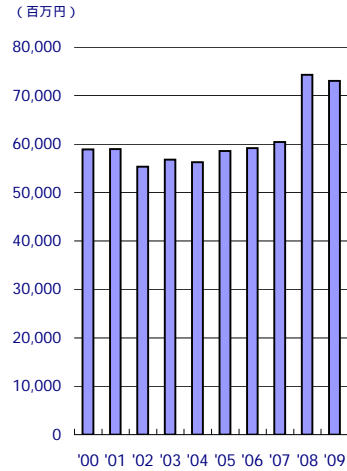
	2000	2001	2002	2003	2004	2005	2006	2007	2008	2009
売上高	39,457 (100.0%)	42,165 (100.0%)	39,883 (100.0%)	41,643 (100.0%)	42,197 (100.0%)	45,413 (100.0%)	41,592 (100.0%)	46,357 (100.0%)	56,704 (100.0%)	61,737 (100.0%)
売上原価	29,297 (74.2%)	31,394 (74.4%)	29,468 (73.8%)	30,706 (73.7%)	30,919 (73.2%)	33,691 (74.2%)	31,054 (74.7%)	35,301 (76.1%)	44,794 (79.0%)	47,300 (76.6%)
売上総利益	10,159 (25.7%)	10,770 (25.5%)	10,415 (26.1%)	10,937 (26.2%)	11,278 (26.7%)	11,722 (25.8%)	10,537 (25.3%)	11,055 (23.8%)	11,910 (21.0%)	14,437 (23.4%)
販売費及び一般管理費	8,992 (22.7%)	8,743 (20.7%)	8,590 (21.5%)	8,292 (19.9%)	8,292 (19.6%)	8,472 (18.6%)	8,441 (20.3%)	8,731 (18.8%)	9,526 (16.8%)	10,213 (16.5%)
営業利益	1,167 (2.9%)	2,027 (4.8%)	1,825 (4.5%)	2,645 (6.3%)	2,985 (7.0%)	3,249 (7.2%)	2,096 (5.0%)	2,324 (5.0%)	2,383 (4.2%)	4,223 (6.8%)
営業外収益	397 (1.0%)	356 (0.8%)	250 (0.6%)	322 (0.7%)	384 (0.9%)	386 (0.9%)	472 (1.1%)	597 (1.3%)	710 (1.3%)	628 (1.0%)
営業外費用	379 (0.9%)	430 (1.0%)	312 (0.7%)	319 (0.7%)	296 (0.7%)	216 (0.5%)	192 (0.5%)	268 (0.6%)	310 (0.5%)	347 (0.6%)
経常利益	1,186 (3.0%)	1,953 (4.6%)	1,762 (4.4%)	2,647 (6.3%)	3,073 (7.2%)	3,419 (7.5%)	2,376 (5.7%)	2,653 (5.7%)	2,783 (4.9%)	4,503 (7.3%)
特別利益	761 (1.9%)	1,577 (3.7%)	97 (0.2%)	228 (0.5%)	482 (1.1%)	254 (0.6%)	564 (1.4%)	281 (0.6%)	323 (0.6%)	69 (0.1%)
特別損失	3,451 (8.7%)	2,142 (5.0%)	3,420 (8.5%)	169 (0.4%)	304 (0.7%)	101 (0.2%)	440 (1.1%)	1,115 (2.4%)	1,594 (2.8%)	579 (0.9%)
当期純利益	-865 (-2.1%)	687 (1.6%)	-1,036 (-2.5%)	1,568 (3.7%)	1,801 (4.2%)	2,101 (4.6%)	1,336 (3.2%)	1,066 (2.3%)	1,119 (2.0%)	2,044 (3.3%)

注記：売上総利益率 = 売上総利益 / 売上高 × 100

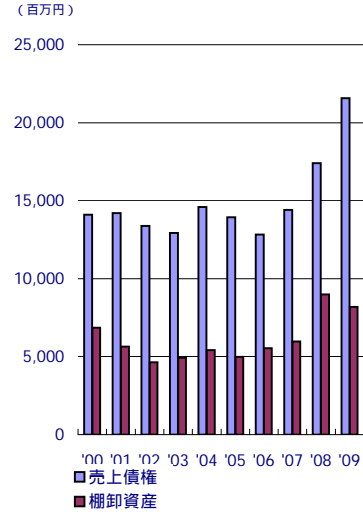
販管費 = 販売費及び一般管理費
販管費率 = 販売費及び一般管理費 / 売上高 × 100

経常利益率 = 経常利益 / 売上高 × 100
当期純利益率 = 当期純利益 / 売上高 × 100

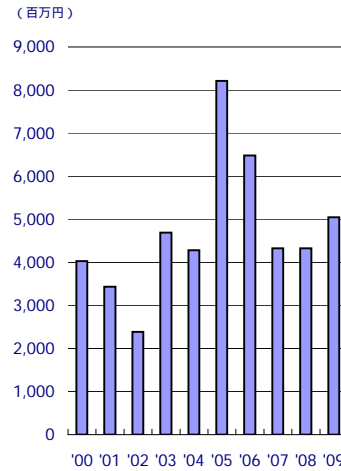
総資産



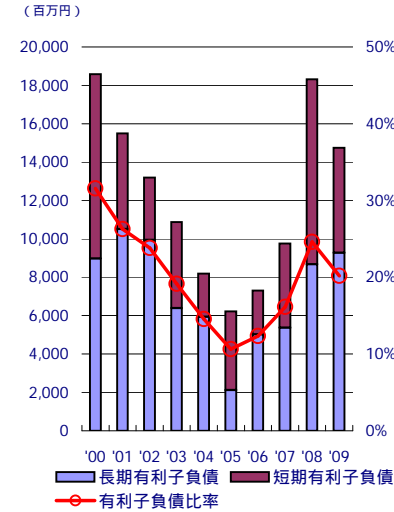
売上債権・棚卸資産



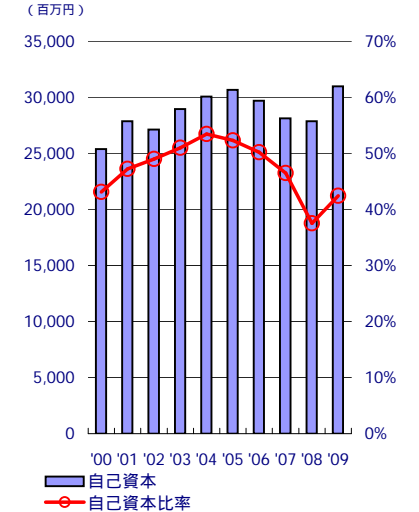
投資有価証券



有利子負債・有利子負債比率



自己資本・自己資本比率



連結貸借対照表

単位：百万円

	2000	2001	2002	2003	2004	2005	2006	2007	2008	2009
総資産	58,911 (100.0%)	59,003 (100.0%)	55,350 (100.0%)	56,796 (100.0%)	56,242 (100.0%)	58,590 (100.0%)	59,165 (100.0%)	60,456 (100.0%)	74,310 (100.0%)	73,058 (100.0%)
流動資産	26,708 (45.3%)	25,333 (42.9%)	24,857 (44.9%)	24,499 (43.1%)	23,771 (42.2%)	22,384 (38.2%)	24,294 (41.1%)	25,408 (42.0%)	37,178 (50.0%)	36,269 (49.6%)
売上債権	14,108 (23.9%)	14,213 (24.1%)	13,379 (24.2%)	12,934 (22.8%)	14,589 (25.9%)	13,932 (23.8%)	12,822 (21.7%)	14,408 (23.8%)	17,403 (23.4%)	21,579 (29.5%)
棚卸資産	6,848 (11.6%)	5,653 (9.6%)	4,648 (8.4%)	4,920 (8.7%)	5,416 (9.6%)	4,993 (8.5%)	5,540 (9.4%)	5,967 (9.9%)	8,987 (12.1%)	8,200 (11.2%)
固定資産	32,202 (54.6%)	33,670 (57.0%)	30,492 (55.0%)	32,296 (56.9%)	32,470 (57.7%)	36,205 (61.8%)	34,871 (58.9%)	35,047 (58.0%)	37,131 (50.0%)	36,789 (50.4%)
有形固定資産	25,717 (43.6%)	27,533 (46.6%)	26,570 (48.0%)	26,536 (46.7%)	27,083 (48.1%)	26,887 (45.9%)	27,211 (46.0%)	29,170 (48.3%)	30,686 (41.3%)	29,778 (40.8%)
無形固定資産	92 (0.1%)	306 (0.5%)	290 (0.5%)	240 (0.4%)	222 (0.4%)	185 (0.3%)	161 (0.3%)	289 (0.5%)	451 (0.6%)	433 (0.6%)
投資その他の資産	6,392 (10.8%)	5,831 (9.8%)	3,631 (6.5%)	5,519 (9.7%)	5,164 (9.1%)	9,131 (15.6%)	7,498 (12.7%)	5,587 (9.2%)	5,993 (8.1%)	6,576 (9.0%)
投資有価証券	4,031 (6.8%)	3,435 (5.8%)	2,384 (4.3%)	4,691 (8.3%)	4,281 (7.6%)	8,213 (14.0%)	6,480 (11.0%)	4,323 (7.2%)	4,324 (5.8%)	5,044 (6.9%)
負債	31,658 (53.7%)	30,861 (52.3%)	27,980 (50.5%)	27,571 (48.5%)	25,904 (46.0%)	27,650 (47.2%)	29,195 (49.3%)	32,048 (53.0%)	44,960 (60.5%)	41,756 (57.2%)
流動負債	20,971 (35.5%)	18,512 (31.3%)	15,952 (28.8%)	18,490 (32.5%)	16,866 (29.9%)	18,884 (32.2%)	18,248 (30.8%)	21,922 (36.3%)	29,506 (39.7%)	25,495 (34.9%)
短期有利子負債	9,608 (16.3%)	4,982 (8.4%)	3,254 (5.9%)	4,493 (7.9%)	2,252 (4.0%)	4,118 (7.0%)	2,288 (3.9%)	4,398 (7.3%)	9,637 (13.0%)	5,472 (7.5%)
固定負債	10,687 (18.1%)	12,349 (20.9%)	12,028 (21.7%)	9,080 (15.9%)	9,038 (16.0%)	8,765 (15.0%)	10,947 (18.5%)	10,125 (16.7%)	15,453 (20.8%)	16,260 (22.3%)
長期有利子負債	8,977 (15.2%)	10,510 (17.8%)	9,936 (18.0%)	6,382 (11.2%)	5,930 (10.5%)	2,112 (3.6%)	5,024 (8.5%)	5,363 (8.9%)	8,677 (11.7%)	9,276 (12.7%)
少数株主持分	1,871 (3.1%)	267 (0.4%)	262 (0.4%)	274 (0.4%)	286 (0.5%)	280 (0.5%)	-	-	-	-
純資産	25,382 (43.0%)	27,874 (47.2%)	27,107 (48.9%)	28,950 (50.9%)	30,051 (53.4%)	30,659 (52.3%)	29,969 (50.7%)	28,408 (47.0%)	29,349 (39.5%)	31,302 (42.8%)
資本金	4,640 (7.8%)	4,746 (8.0%)	4,746 (8.5%)	4,746 (8.3%)	4,746 (8.4%)	4,746 (8.1%)	4,746 (8.0%)	4,746 (7.9%)	4,746 (6.4%)	4,746 (6.5%)
自己株式	-168 (-0.2%)	-168 (-0.2%)	-106 (-0.1%)	-719 (-1.2%)	-952 (-1.6%)	-1,610 (-2.7%)	-2,321 (-3.9%)	-2,496 (-4.1%)	-2,711 (-3.6%)	-1,023 (-1.4%)
少数株主持分							286 (0.5%)	298 (0.5%)	1,486 (2.0%)	338 (0.5%)

注記：売上債権 = 受取手形及び売掛金

短期有利子負債 = 短期借入金 + 一年以内返済予定の長期借入金 + 一年以内償還予定の社債

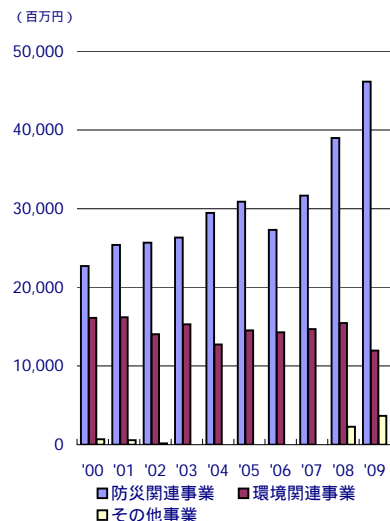
長期有利子負債 = 社債 + 長期借入金

有利子負債 = 短期借入金 + 一年以内返済予定の長期借入金 + 一年以内償還予定の社債 + 社債 + 長期借入金

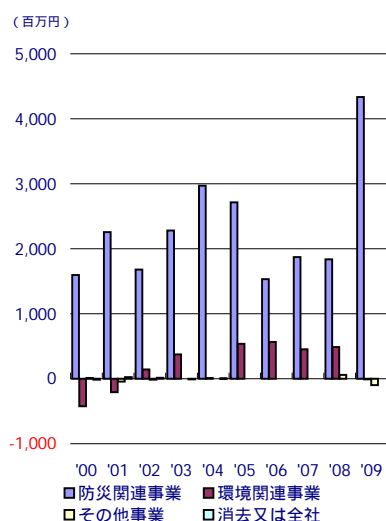
有利子負債比率 = 有利子負債 / 総資産 × 100

自己資本比率 = 自己資本 / 総資産 × 100

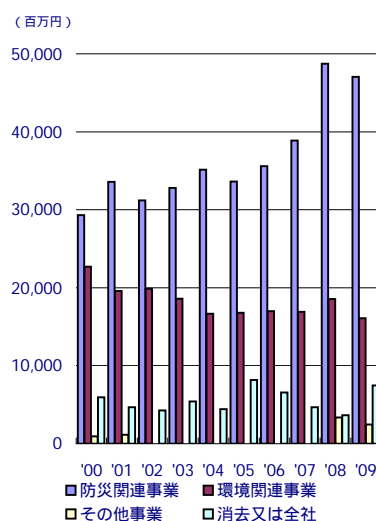
セグメント別売上高



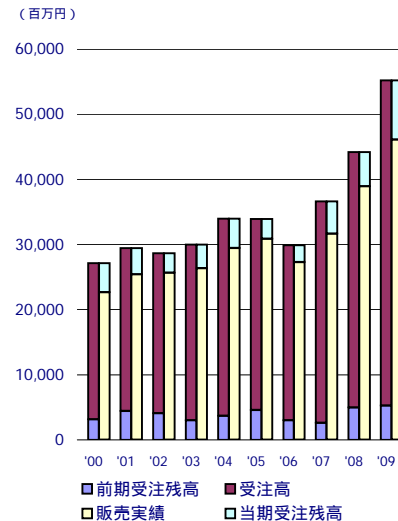
セグメント別営業利益



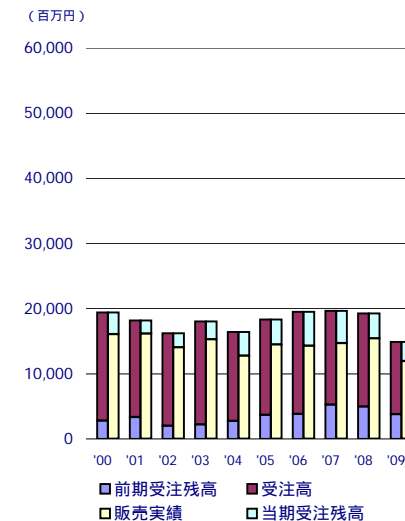
セグメント別資産



受注状況 (防災関連事業)



受注状況 (環境関連事業)

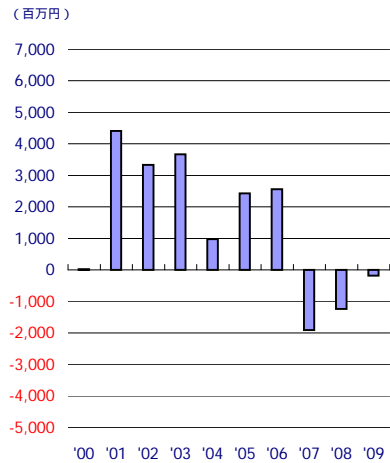


セグメント情報

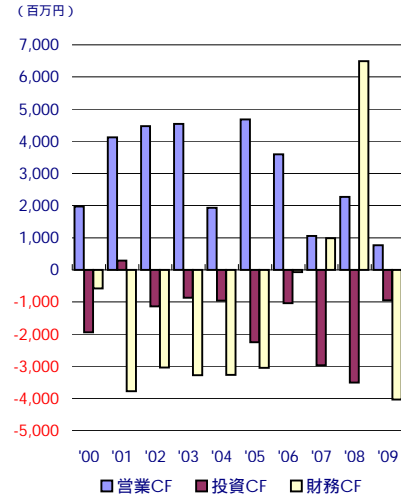
単位：百万円

	2000	2001	2002	2003	2004	2005	2006	2007	2008	2009
売上高	39,457 (100.0%)	42,165 (100.0%)	39,883 (100.0%)	41,643 (100.0%)	42,197 (100.0%)	45,413 (100.0%)	41,592 (100.0%)	46,357 (100.0%)	56,704 (100.0%)	61,737 (100.0%)
防災関連事業	22,688 (57.5%)	25,404 (60.2%)	25,665 (64.4%)	26,338 (63.2%)	29,444 (69.8%)	30,892 (68.0%)	27,309 (65.7%)	31,651 (68.3%)	38,975 (68.7%)	46,128 (74.7%)
環境関連事業	16,092 (40.8%)	16,183 (38.4%)	14,037 (35.2%)	15,305 (36.8%)	12,752 (30.2%)	14,520 (32.0%)	14,283 (34.3%)	14,706 (31.7%)	15,447 (27.2%)	11,945 (19.3%)
その他	676 (1.7%)	577 (1.4%)	180 (0.5%)						2,281 (0.0%)	3,663 (0.1%)
営業利益	1,167 (100.0%)	2,027 (100.0%)	1,825 (100.0%)	2,645 (100.0%)	2,985 (100.0%)	3,249 (100.0%)	2,096 (100.0%)	2,324 (100.0%)	2,383 (100.0%)	4,223 (100.0%)
防災関連事業	1,596 (136.8%)	2,255 (111.2%)	1,679 (92.0%)	2,280 (86.2%)	2,970 (99.5%)	2,712 (83.5%)	1,530 (73.0%)	1,871 (80.5%)	1,836 (77.1%)	4,337 (102.7%)
環境関連事業	-424 (-36.3%)	-208 (-10.3%)	143 (7.8%)	374 (14.1%)	8 (0.3%)	536 (16.5%)	566 (27.0%)	453 (19.5%)	487 (20.5%)	-10 (-0.2%)
その他	9 (0.8%)	-45 (-2.2%)	-15 (-0.8%)						57 (2.4%)	-97 (-2.3%)
消去又は全社	-14 (-1.2%)	25 (1.2%)	17 (0.9%)	-9 (-0.3%)	5 (0.2%)		1 (0.0%)	0 (0.0%)		-7 (-0.2%)
資産	58,911 (100.0%)	59,003 (100.0%)	55,350 (100.0%)	56,796 (100.0%)	56,242 (100.0%)	58,590 (100.0%)	59,165 (100.0%)	60,456 (100.0%)	74,310 (100.0%)	73,058 (100.0%)
防災関連事業	29,290 (49.7%)	33,600 (56.9%)	31,207 (56.4%)	32,780 (57.7%)	35,140 (62.5%)	33,628 (57.4%)	35,610 (60.2%)	38,880 (64.3%)	48,728 (65.6%)	47,037 (64.4%)
環境関連事業	22,715 (38.6%)	19,595 (33.2%)	19,886 (35.9%)	18,595 (32.7%)	16,661 (29.6%)	16,796 (28.7%)	16,986 (28.7%)	16,906 (28.0%)	18,560 (25.0%)	16,091 (22.0%)
その他	956 (1.6%)	1,138 (1.9%)							3,366 (4.5%)	2,457 (3.4%)
消去又は全社	5,949 (10.1%)	4,670 (7.9%)	4,256 (7.7%)	5,419 (9.5%)	4,440 (7.9%)	8,164 (13.9%)	6,568 (11.1%)	4,669 (7.7%)	3,654 (4.9%)	7,472 (10.2%)
受注高	41,210 (100.0%)	40,500 (100.0%)	38,842 (100.0%)	42,882 (100.0%)	44,013 (100.0%)	44,004 (100.0%)	42,593 (100.0%)	48,450 (100.0%)	53,546 (100.0%)	61,104 (100.0%)
防災関連事業	23,960 (58.1%)	25,031 (61.8%)	24,599 (63.3%)	27,215 (63.5%)	30,324 (68.9%)	29,354 (66.7%)	26,888 (63.1%)	34,027 (70.2%)	39,249 (73.3%)	49,989 (81.8%)
環境関連事業	16,640 (40.4%)	14,858 (36.7%)	14,221 (36.6%)	15,667 (36.5%)	13,688 (31.1%)	14,649 (33.3%)	15,705 (36.9%)	14,422 (29.8%)	14,296 (26.7%)	11,114 (18.2%)
その他事業	608 (1.5%)	610 (1.5%)	21 (0.1%)							
受注残高	7,896 (100.0%)	6,231 (100.0%)	5,191 (100.0%)	6,430 (100.0%)	8,246 (100.0%)	6,837 (100.0%)	7,838 (100.0%)	9,931 (100.0%)	9,055 (100.0%)	12,086 (100.0%)
防災関連事業	4,440 (56.2%)	4,067 (65.3%)	3,001 (57.8%)	3,682 (57.3%)	4,562 (55.3%)	3,024 (44.2%)	2,603 (33.2%)	4,980 (50.2%)	5,255 (58.0%)	9,116 (75.4%)
環境関連事業	3,330 (42.2%)	2,005 (32.2%)	2,189 (42.2%)	2,747 (42.7%)	3,683 (44.7%)	3,812 (55.8%)	5,234 (66.8%)	4,950 (49.8%)	3,799 (42.0%)	2,969 (24.6%)
その他事業	125 (1.6%)	159 (2.6%)								

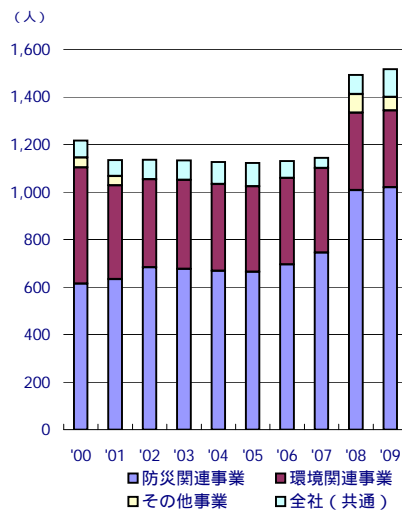
フリー・キャッシュ・フロー



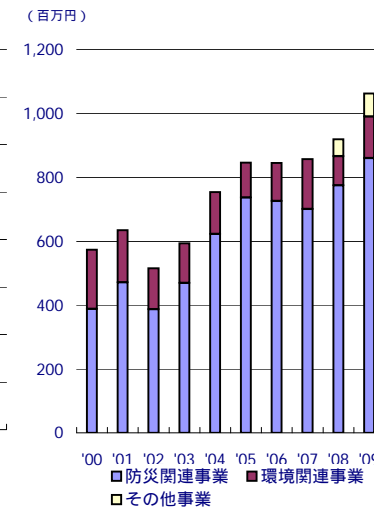
キャッシュ・フロー



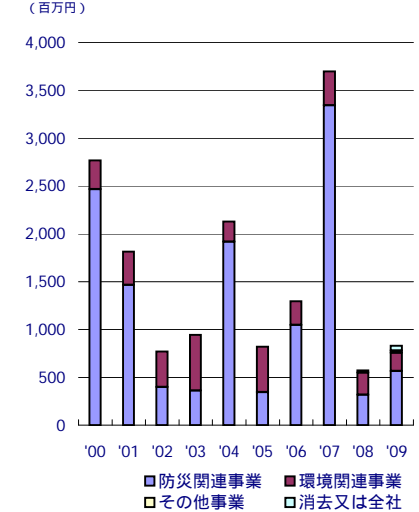
連結従業員数



研究開発費



設備投資額



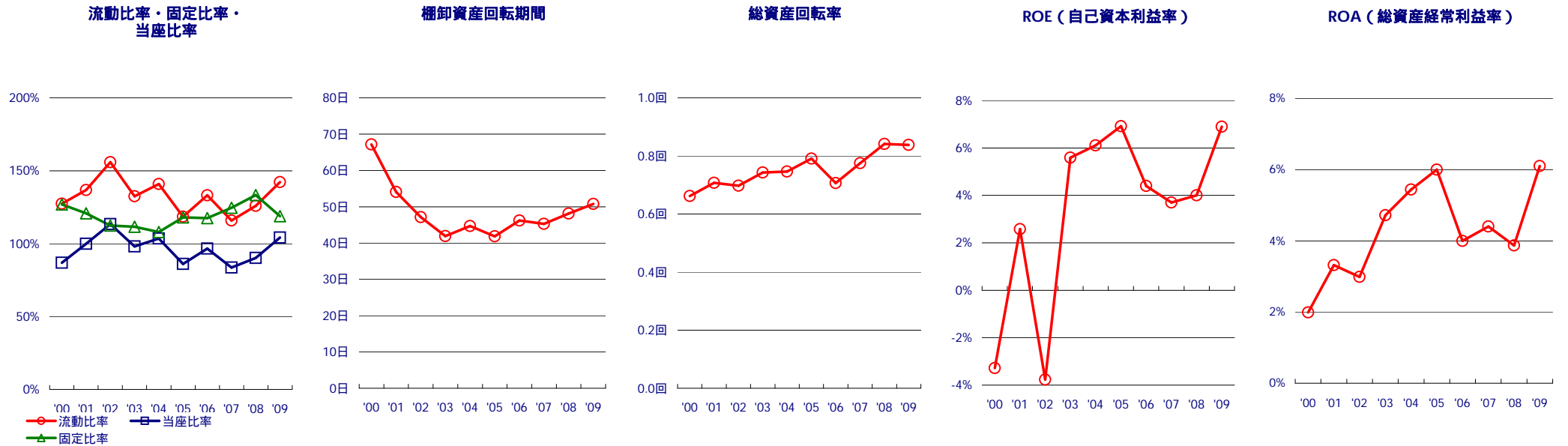
連結キャッシュ・フロー

	2000	2001	2002	2003	2004	2005	2006	2007	2008	2009
営業活動によるキャッシュ・フロー	1,970 (100.0%)	4,122 (100.0%)	4,470 (100.0%)	4,538 (100.0%)	1,928 (100.0%)	4,676 (100.0%)	3,597 (100.0%)	1,057 (100.0%)	2,269 (100.0%)	764 (100.0%)
投資活動によるキャッシュ・フロー	-1,946 (-98.8%)	284 (6.9%)	-1,134 (-25.4%)	-869 (-19.1%)	-953 (-49.4%)	-2,250 (-48.1%)	-1,038 (-28.9%)	-2,972 (-281.2%)	-3,509 (-154.6%)	-950 (-124.3%)
財務活動によるキャッシュ・フロー	-579 (-29.4%)	-3,775 (-91.6%)	-3,041 (-68.0%)	-3,280 (-72.3%)	-3,265 (-169.3%)	-3,045 (-65.1%)	-69 (-1.9%)	982 (92.9%)	6,492 (286.1%)	-4,037 (-528.4%)
フリー・キャッシュ・フロー	24 (1.2%)	4,406 (106.9%)	3,336 (74.6%)	3,669 (80.9%)	975 (50.6%)	2,426 (51.9%)	2,559 (71.1%)	-1,915 (-181.2%)	-1,240 (-54.6%)	-186 (-24.3%)
現金及び現金同等物の期末残高	3,670 (186.3%)	4,301 (104.3%)	4,817 (107.8%)	5,238 (115.4%)	2,947 (152.9%)	2,366 (50.6%)	4,856 (135.0%)	3,947 (373.4%)	9,200 (405.5%)	4,976 (651.3%)

セグメント情報

	2000	2001	2002	2003	2004	2005	2006	2007	2008	2009
設備投資額	2,771 (100.0%)	1,818 (100.0%)	769 (100.0%)	945 (100.0%)	2,131 (100.0%)	820 (100.0%)	1,298 (100.0%)	3,699 (100.0%)	571 (100.0%)	831 (100.0%)
防災関連事業	2,466 (89.0%)	1,467 (80.7%)	398 (51.8%)	362 (38.3%)	1,918 (90.0%)	344 (42.0%)	1,048 (80.7%)	3,344 (90.4%)	319 (55.9%)	567 (68.2%)
環境関連事業	303 (10.9%)	348 (19.1%)	371 (48.2%)	582 (61.6%)	212 (9.9%)	475 (57.9%)	249 (19.2%)	355 (9.6%)	228 (40.0%)	191 (23.0%)
その他事業									23 (4.1%)	22 (2.6%)
消去又は全社										49 (5.9%)
減価償却費	1,038 (100.0%)	1,079 (100.0%)	1,045 (100.0%)	1,002 (100.0%)	986 (100.0%)	945 (100.0%)	890 (100.0%)	884 (100.0%)	1,407 (100.0%)	1,417 (100.0%)
防災関連事業	498 (48.0%)	635 (58.9%)	609 (58.3%)	577 (57.6%)	555 (56.3%)	578 (61.2%)	532 (59.8%)	501 (56.7%)	1,004 (71.4%)	895 (63.2%)
環境関連事業	509 (49.0%)	424 (39.3%)	427 (40.9%)	425 (42.4%)	430 (43.6%)	367 (38.8%)	357 (40.1%)	383 (43.3%)	384 (27.3%)	382 (27.0%)
その他事業	30 (2.9%)	19 (1.8%)	8 (0.8%)						17 (1.2%)	27 (1.9%)
消去又は全社										111 (7.8%)
研究開発費	574 (100.0%)	635 (100.0%)	516 (100.0%)	594 (100.0%)	754 (100.0%)	846 (100.0%)	845 (100.0%)	857 (100.0%)	919 (100.0%)	1,063 (100.0%)
防災関連事業	388 (67.6%)	471 (74.2%)	387 (75.0%)	469 (79.0%)	623 (82.6%)	737 (87.1%)	726 (85.9%)	701 (81.8%)	775 (84.3%)	860 (80.9%)
環境関連事業	185 (32.2%)	164 (25.8%)	128 (24.8%)	124 (20.9%)	131 (17.4%)	109 (12.9%)	120 (14.1%)	156 (18.2%)	91 (9.9%)	130 (12.3%)
その他事業									53 (5.8%)	72 (6.8%)

	2000	2001	2002	2003	2004	2005	2006	2007	2008	2009
連結従業員数	1,216 (100.0%)	1,134 (100.0%)	1,136 (100.0%)	1,133 (100.0%)	1,126 (100.0%)	1,124 (100.0%)	1,130 (100.0%)	1,143 (100.0%)	1,492 (100.0%)	1,517 (100.0%)
防災関連事業	614 (50.5%)	633 (55.8%)	683 (60.1%)	676 (59.7%)	668 (59.3%)	666 (59.3%)	695 (61.5%)	745 (65.2%)	1,008 (67.6%)	1,019 (67.2%)
環境関連事業	489 (40.2%)	394 (34.7%)	370 (32.6%)	375 (33.1%)	365 (32.4%)	359 (31.9%)	364 (32.2%)	355 (31.1%)	326 (21.8%)	324 (21.4%)
その他事業	42 (3.5%)	40 (3.5%)							77 (5.2%)	56 (3.7%)
全社 (共通)	71 (5.8%)	67 (5.9%)	83 (7.3%)	82 (7.2%)	93 (8.3%)	99 (8.8%)	71 (6.3%)	43 (3.8%)	81 (5.4%)	118 (7.8%)



安全性指標

	2000	2001	2002	2003	2004	2005	2006	2007	2008	2009
流動比率	127.4%	136.8%	155.8%	132.5%	140.9%	118.5%	133.1%	115.9%	126.0%	142.3%
当座比率	87.0%	99.9%	113.4%	98.1%	103.6%	86.1%	96.6%	83.6%	90.2%	104.3%
固定比率	126.9%	120.8%	112.5%	111.6%	108.0%	118.1%	117.5%	124.7%	133.3%	118.8%
有利子負債比率	31.5%	26.3%	23.8%	19.1%	14.5%	10.6%	12.4%	16.1%	24.6%	20.2%
有利子負債利率	1.5%	1.5%	1.6%	1.5%	1.8%	1.8%	1.7%	2.0%	1.7%	1.7%
インタレスト・カバレッジ・レシオ	7.10倍	15.50倍	19.40倍	25.70倍	10.60倍	35.40倍	29.30倍	6.30倍	9.80倍	2.70倍
棚卸資産回転期間	67.20日	54.11日	47.14日	41.93日	44.70日	41.83日	46.22日	45.30日	48.13日	50.80日

注記：流動比率 = 流動資産 ÷ 流動負債 × 100
当座比率 = 当座資産 ÷ 流動負債 × 100

固定比率 = 固定資産 ÷ 自己資本 × 100

有利子負債比率 = 有利子負債 ÷ 総資産 × 100
有利子負債利率 = 支払利息 ÷ 期首・期末平均有利子負債 × 100

インタレスト・カバレッジ・レシオ = 営業キャッシュ・フロー ÷ 利払い
棚卸資産回転期間 = 期首・期末平均棚卸資産 ÷ 売上高 × 365

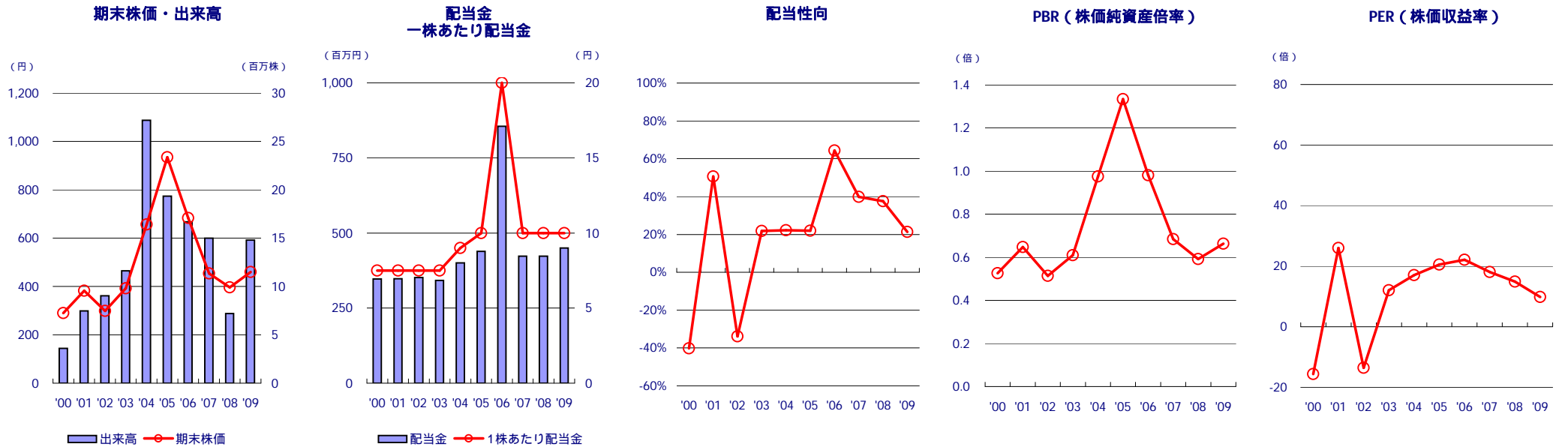
収益性指標

	2000	2001	2002	2003	2004	2005	2006	2007	2008	2009
総資産回転率	0.66回	0.71回	0.70回	0.74回	0.75回	0.79回	0.71回	0.78回	0.84回	0.84回
経営資産回転率	0.74回	0.80回	0.76回	0.81回	0.82回	0.90回	0.82回	0.87回	0.92回	0.92回
ROE (自己資本利益率)	-3.3%	2.6%	-3.8%	5.6%	6.1%	6.9%	4.4%	3.7%	4.0%	6.9%
ROA (総資産経常利益率)	2.0%	3.3%	3.0%	4.7%	5.4%	6.0%	4.0%	4.4%	4.1%	6.1%
経営資産営業利益率	2.2%	3.8%	3.5%	5.1%	5.8%	6.5%	4.1%	4.4%	3.9%	6.3%

注記：総資産回転率 = 売上高 ÷ 期首・期末平均総資産
経営資産回転率 = 売上高 ÷ 期首・期末平均経営資産(総資産 - 投資等)

ROE (自己資本利益率) = 当期純利益 ÷ 期首・期末平均自己資本 × 100
ROA (総資産経常利益率) = 経常利益 ÷ 期首・期末平均総資産 × 100

経営資産営業利益率 = 営業利益 ÷ 期首・期末平均経営資産(総資産 - 投資等) × 100



株価関連指標

	2000	2001	2002	2003	2004	2005	2006	2007	2008	2009
1株あたり配当金	7.50円	7.50円	7.50円	7.50円	9.00円	10.00円	20.00円	10.00円	10.00円	10.00円
配当金	347百万円	348百万円	351百万円	342百万円	400百万円	439百万円	855百万円	423百万円	423百万円	450百万円
PBR (株価純資産倍率)	0.53倍	0.65倍	0.51倍	0.61倍	0.98倍	1.33倍	0.98倍	0.68倍	0.59倍	0.66倍
PER (株価収益率)	-15.68倍	26.02倍	-13.62倍	12.04倍	17.03倍	20.50倍	22.00倍	18.08倍	14.87倍	9.79倍
配当利回り	2.59%	1.96%	2.51%	1.91%	1.37%	1.07%	2.93%	2.20%	2.53%	2.17%
配当性向	-40.15%	50.62%	-33.92%	21.83%	22.22%	21.93%	64.40%	39.80%	37.55%	21.27%
自己株式取得額	375百万円	200百万円	223百万円	613百万円	232百万円	646百万円	773百万円	177百万円	220百万円	61百万円
自己株式処分額	208百万円	264百万円	204百万円					2百万円	5百万円	1,749百万円
発行済株式総数	46,593千株	47,835千株	46,918千株	46,918千株	46,918千株	46,918千株	46,918千株	46,918千株	46,918千株	46,918千株
1株当たり純資産	551.27円	589.48円	582.05円	642.84円	673.77円	700.64円	695.94円	663.47円	669.19円	693.61円
1株当たり当期純利益	-18.50円	14.68円	-21.96円	32.55円	38.58円	45.61円	31.05円	25.11円	26.63円	47.01円
最高値	315円	418円	424円	415円	709円	995円	970円	697円	500円	565円
最安値	241円	250円	269円	291円	365円	590円	500円	400円	284円	322円
期末株価	290円	382円	299円	392円	657円	935円	683円	454円	396円	460円
出来高	3,599千株	7,475千株	9,035千株	9,333千株	26,877千株	19,344千株	16,692千株	15,011千株	7,200千株	14,793千株

注記：配当性向 = 1株あたり配当金 ÷ 1株あたり当期純利益 × 100

PBR (株価純資産倍率) = 株価 ÷ 1株あたり純資産
 PER (株価収益率) = 株価 ÷ 1株あたり当期純利益

2006年度以前の純資産に少数株主持分は含まれておりません。