

MURITA

FIRE FIGHTING TRUCKS
MCF/MWF SERIES

CHEMICAL/WATER TENDER



FOR OPTIMAL FIRE

FIGHTING SOLUTION!

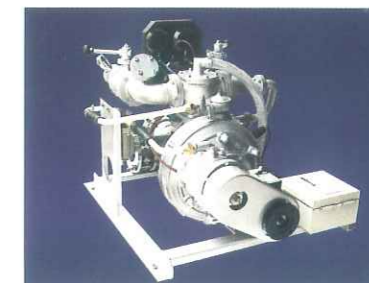
Corrosion Free Light-Weight Body!
Powerful, Robust, Water Pump!
Easy-to-Use Design!

FIRE PUMP (ME-5)

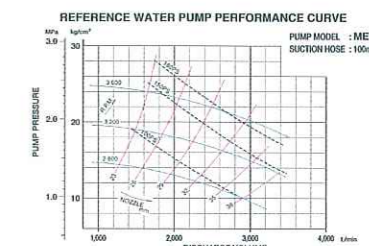
Fire Pump



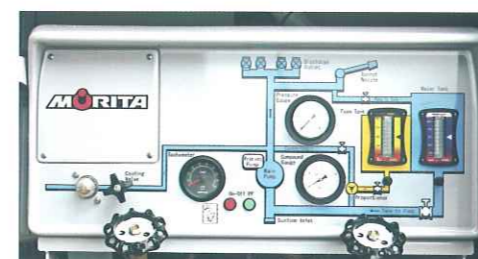
A PTO driven fire pump is mounted on the vehicle. ME-5, a centrifugal type two-stage balanced turbine pump, is made with the most suitable materials. Its design places all its parts in the best proportionate manner and ensures waterway clearance, absence of air pockets, vibration and pulsation. etc.



Casing : Ductile cast iron with suitable coat
Impeller : Bronze casting
Shaft : Stainless steel
Drive : Vehicle PTO
Nominal pump output: 3,000L / min at total head 8 bar
Also available as option:
Larger discharge pump, High/Low pump



Pump Display

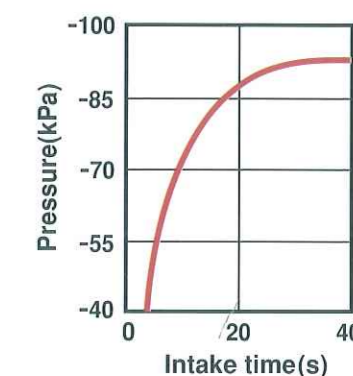


The integrated control and monitoring panel houses all controls necessary for the operation of the fire pump system, such as electric switches for remote control of PTO-engagement, valves for water and foam concentrate feed, proportioning system, turret discharge, etc, as well as control lamps and gauges indicating contents of water and foam tanks.

Priming System

A fully automatic piston priming pump is equipped along with the main fire pump. It is propelled simultaneously by the pump driving shaft and is engaged by an electro-magnetic clutch. The priming system is started by a simple push of a button. Its safety function automatically turns it off after completing the priming process.

Displacement volume : 970cc/rev
Rated speed : 1600r.p.m



BODY STRUCTURE

MORITA CHEMICAL / WATER TENDER

is designed to enable easy operation during fire fighting.
The body, made from anti-rust and anti-corrosion materials, is best suited for fire fighting activities.
Water tank and foam tank are mounted at the center of the vehicle.
Sufficient number of lockers for storing equipments are provided at both sides of the vehicle.

The vehicle body is made from GRP.
GRP enables stylish curved body with sufficient lockers for storage of equipments.

GRP body (Glass fiber Reinforced Plastic)



The vehicle body, made with aluminum frames and panels, is designed to provide sufficient number of lockers.

Aluminum body



EQUIPMENTS AND ACCESSORIES



RETRACTABLE LADDER



SEARCH LIGHT
60W, 180mm



ALUMINUM EXTENSION LADDER
Full extension 5.2M



FOAM TURRET NOZZLE
1000L/min at 7bar



DOWN-FOLD ACCESS
STEPS (Both Sides)



LOCKER COMPARTMENTS



Lockers' size is adjustable.

OPTIONAL EQUIPMENTS



Extendable Lighting Tower
Halogen 1000W×2pcs
6M high from the ground



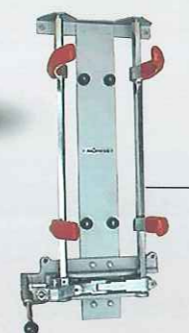
Flap Type Foam Nozzle
2400L / min at 8 bar, Water flow is adjustable



Portable Generator
Gasoline driven 5KVA



SCBA Seat
(Self Contained Breathing Apparatus)
SCBA Seat is installed on the backrests of the seats.



Quick Holder (BA-set brackets)
Quick Holder is installed on the backrests of the seats.



Drawer
For easy access to equipment

OTHER PUMPS
Large Volume Pump
Pump model: MD260A
Performance: 4,200L/min at total head 8 bar

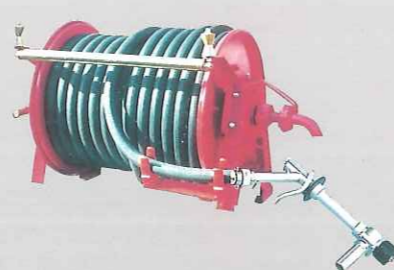
High / Low Pump
Pump model: MEV 52
Performance: Low pressure, Same as ME-5
High pressure, 200L / min at 40 bar



MIRACLE CAFS
Morita's State-of-the-Art, MIRACLE CAFS

- Economical - Water use is 1/17 of regular water tender*
- Effective - Increase extinguishing power
- Light Weight - Single hand operation

*Based on the extinguishing test conducted by Morita with Japanese fire department



Quick Intervention Hose Reels
The Booster Hose Reel with a fog/straight nozzle. is mounted at the rear of the vehicle.

More other options are available. Please contact one of our sales representatives.

SPECIFICATIONS

WATER TENDER

MODEL	MWF-15	MWF-30	MWF-40	MWF-60	MWF-120
Water Tank	1500L	3000L	4000L	6000L	12000L
Body	Aluminum	GRP / Aluminum		Aluminum	
Water Pump	ME-5 Midship/Rearmount				
Approx. G.V.W	6,900KG	10,000KG	11,000KG	14,800KG	23,800KG
Approx. Overall length	5,900mm	7,440mm	7,440mm	7,700mm	9,500mm
Approx. Overall width	2,180mm	2,430mm	2,430mm	2,430mm	2,495mm
Approx. Overall height	2,600mm	3,250mm	3,250mm	3,250mm	3,250mm
Seating capacity	3 to 7				

CHEMICAL TENDER

MODEL	MCF-30	MCF-40	MCF-60	MCF-100
Water Tank	3000L	4000L	6000L	10000L
Form Liquid Tank	300L	400L	600L	1000L
Body	GRP / Aluminum		Aluminum	
Water Pump	ME-5 Midship/Rearmount			
Foam proportioning system	Pump Proportioning system			
Approx. G.V.W	10,300KG	11,400KG	15,400KG	23,800KG
Approx. Overall length	7,440mm	7,440mm	7,700mm	9,500mm
Approx. Overall width	2,430mm	2,430mm	2,430mm	2,495mm
Approx. Overall height	3,250mm	3,250mm	3,250mm	3,150mm
Seating capacity	3 to 7			

Owing to ongoing product development and improvement these specifications are subject to change without prior notice.

In addition to the above standard sizes, custom configurations are also available to suit specific requirements.

Head Office



1-5 Techno Park, Sanda-shi, Hyogo, 669-1339, Japan

Sanda Factory



Vietnam Factory (MORITA VIETNAM)



Km31-Minh duc Commune, My Hao District,
Hung Yen Province, Vietnam

MORITA MORITA CORPORATION

3-25-1, NISHISHINBASHI, MINATO-KU, TOKYO 105-0003 JAPAN
PHONE +81-3-5777-5078 FAX +81-3-3435-7386

<http://www.morita119.com>

The specification of the products are subject to change
due to developments or customers' request.
08.Sep.URANO